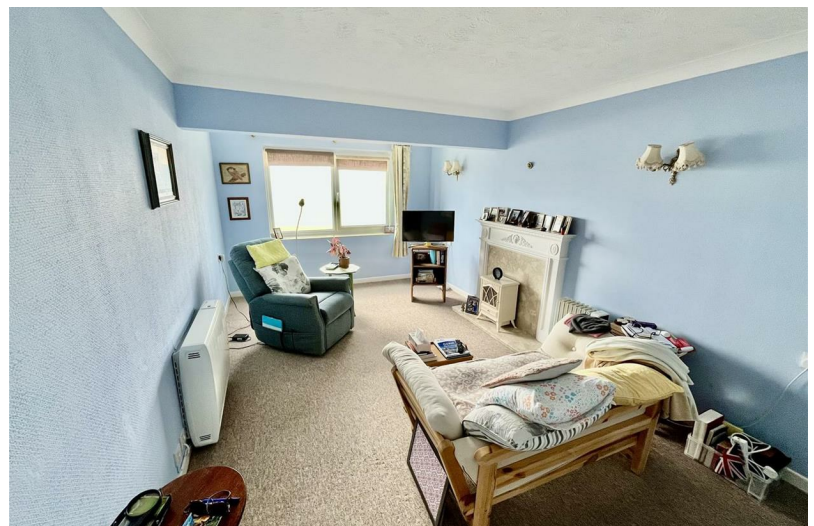


1
BED

Retirement Flat with Panoramic Sea Views

27, Merryfield Court, Seaford, BN25 2PN



Price £125,000

Leasehold

phillipmann
we do more

www.phillipmann.com



inbrief...

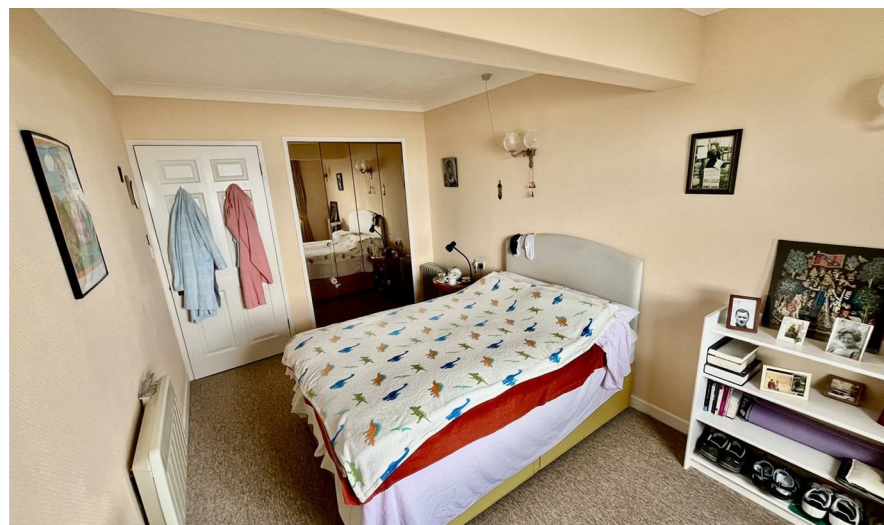
Phillip Mann estate agents are delighted to present this one bedroom retirement flat with stunning coastal views. Situated on the second floor, the property boasts panoramic sea views that can be enjoyed from both the lounge & bedroom.

Residents of Merryfield Court can enjoy the benefits of a residents lounge, communal garden, guest suite, communal laundry room, passenger lift, door entry phone system and communal parking and benefits from cavity wall insulation and CCTV security. The development has a resident house manager on call five days a week and benefits from a 24 hour careline system.

The flat features a large living room with fireplace & electric heaters. The kitchen is located adjacent to the lounge and benefits from plenty of cupboard space, built in hob & oven and plenty of space for white goods such as a fridge/freezer. The flat features a well-appointed double bedroom, complete with built-in wardrobes, providing ample storage and a tidy living environment. The bathroom consists of a walk-in shower, W/C, Basin with mirror above and cupboards below.

Room Dimensions:
 Living Room: 17'11 x 10'7
 Bedroom: 14'7 x 8'8
 Kitchen: 7'4 x 5'4

Service Charge £2595 Per Half Year
 Ground Rent £249 Per Half Year
 Lease - 89 Years Remaining



EPC - B
 Council Tax - C

moreinfo...

Phillip Mann Seaford Office
 1-3 Dane Road, Seaford, East Sussex, BN25 1LG
 01323 898666



To see more details on this & all our homes go to
www.phillipmann.com